

NUMBER 34

JANUARY 7, 1917

OCCASIONAL PAPERS OF THE MUSEUM OF
ZOOLOGY

UNIVERSITY OF MICHIGAN

ANN ARBOR, MICHIGAN.

PUBLISHED BY THE UNIVERSITY.

DESCRIPTION OF A NEW SPECIES OF
ELEUTHERODACTYLUS FROM COLOMBIA.

BY ALEXANDER G. RUTHVEN.

The species described in this paper is represented in the Museum of Zoology by a number of specimens from the Santa Marta Mountains, Colombia, taken by M. A. Carriker in 1914.

Eleutherodactylus insignitus, new species.

Diagnosis: Size large; head broad, not as broad as body; snout rounded; nostril much nearer end of snout than eye. Vomerine teeth in two approximated fasciculi behind the choanae; tongue oval, feebly emarginate posteriorly. Tympanum distinct, about one-third of the diameter of eye. Toes free; tibio-tarsal articulation reaching between the eye and ear

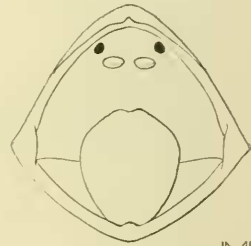
when the leg is extended along the side. Skin smooth except for a few low tubercles on sides of head. Dull gray above, with black markings on the head and neck; inguinal region, anterior and posterior regions of the femur and the under surface of the tibia black with pale spots; ventral surface pale yellow more or less marbled with brown.



x 1.41



x 1.5



x 1.48



Habitat: Santa Marta Mountains, Colombia.

Type Specimen: Cat. No. 48393, Museum of Zoology, University of Michigan; heights east of San Miguel (6,000-7,000 feet), Santa Marta Mountains, Colombia; April 24, 1914; M. A. Carriker, collector.

Description of Type Specimen: Head a little broader than long; snout rounded, with distinct canthus rostralis, 1.3 times as long as the diameter of the eye. Tongue oval, feebly emarginate; vomerine teeth in two approximated fasciculi behind the choanae. Fingers moderate, the first a little shorter than the second; toes long, free; disks small, a little smaller than the ear; subarticular tubercles well developed, a large

inner and a very small outer metatarsal tubercle (one of the latter lacking). Skin smooth except for a few small tubercles on the side of the head. Color above deep mouse grey, a little lighter on interorbital region and nape; a black band along canthus rostralis, two black bands from the eye in front and behind ear and inclosing a broad dull yellow band, a broken interocular black band and a few black marks on each side of the nape and behind the shoulder; upper lip mostly black; belly pale yellow faintly marbled with brown; inguinal region and anterior region of femur black with well defined pale spots; posterior region of femur and inferior surface of tibia black with pale spots.

Total length, 53 mm.; length of head (to posterior margin of ear), 18 mm.; width of head, 20 mm.; length of snout, 9 mm.; fore leg to tip of longest finger, 32 mm.; hind leg to tip of longest toe, 87 mm.; hind leg to heel, 49 mm.

Notes on Paratypes: Fifteen specimens have been used in preparing the diagnosis of the species, and the structural characters and coloration are remarkably constant in this series. The type differs from most of the others in that one of the lateral black head bands is obsolete. In the normal coloration there are three black bands from the eye to the mouth, preceded by a black spot on the lip. One specimen (No. 48407, Univ. of Mich.) differs from all of the others in coloration. In this specimen the back is largely covered with irregular black spots surrounded with narrow olive gray lines and more or less relieved by small punctulations of the same color; the thighs are broadly cross banded with black; the lateral head bands are so wide that the interspaces are restricted to narrow pale gray lines; the ventral surface is dark brown with dull white variegations and the under-surface of the thighs is black or bone brown with numerous well defined white spots.